

Installation Instructions

Home Tree

Part # AP004



ID SCULPTURE

PLAY. CLIMB. EXPLORE.

Specifications: Home Tree

- Material: Concrete with Structural Foam
- Approximate Uninstalled Size: 8'-2" x 6'-3" x 7'-8" Tall
- Approximate Weight: 5,000 Lbs
- Maximum Fall Height: 6'-4" (assumes 1' of safety surfacing)
- Age Group: 5-12 Years Old

Required Parts (included):

- "Home Tree" Drawing Set
- Home Tree GFRC Sculpture
- Ramp Net
- 4" x 4" x 3/8" Aluminum Angle Mounting Brackets: 4ct
- 3/4" x 8-1/2" Wedge Anchor (Sculpture Anchors): 4ct
- 1/2" x 8-1/2" Wedge Anchor (Sculpture Anchors): 3ct
- Bolt Hanger / Lifting Eye: 4ct
- Igloo Rope Connector W/ Connection Pin : 2ct

Recommended Equipment (not included):

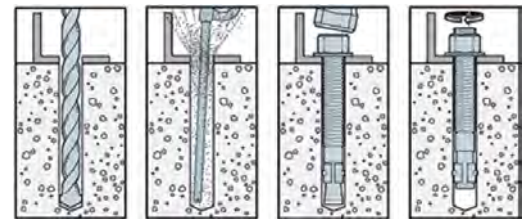
- Hammer Drill
- 3/4" x 10" Concrete Drill Bit
- 1/2" x 10" Concrete Drill Bit
- Hammer
- 3/4" Wrench
- 1-1/8" Wrench
- 12' Lifting Straps: 4ct
- 1/2" Quick Link: 4ct
- Large Adjustable Crescent Wrench
- Lift: Reach Type Forklift 8,000 lb Capacity or Crane
- Air Compressor
- Grinder with Cutoff Wheel or Hack Saw

591 South Boulevard Street
Gunnison, Colorado 81230
info@idsculpture.com
970-641-1747



Important Notes:

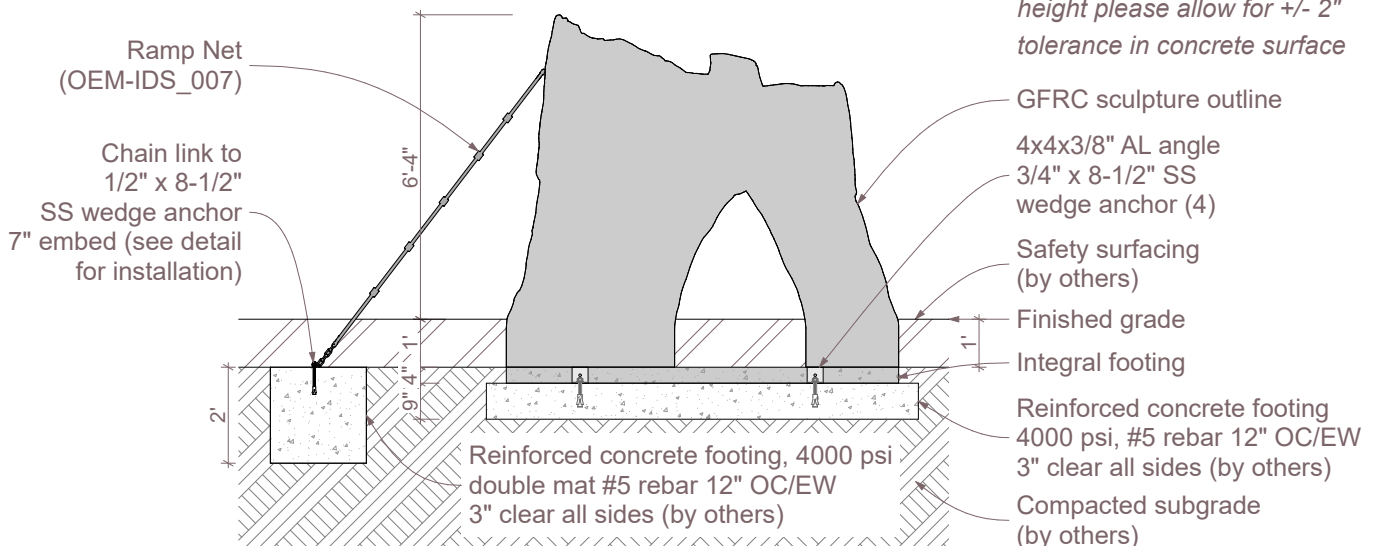
- *Warning: Installation over a hard surface such as asphalt, or packed earth may result in serious injury or death from falls.*
- *It is the responsibility of the installer to ensure all components are installed in compliance with ASTM F-1487.*
- *All site built footings should be allowed to cure for a minimum of 48 hours prior to installation.*



Typical Wedge Anchor Installation

Note:

When determining critical fall height please allow for +/- 2" tolerance in concrete surface



Section

Installation Instructions

Home Tree

Part # AP004

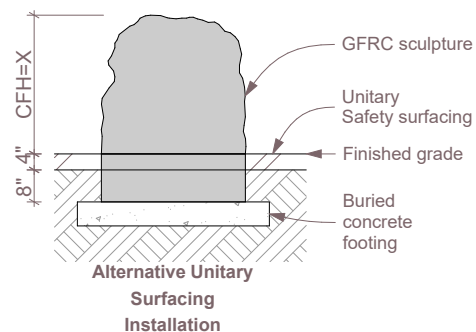
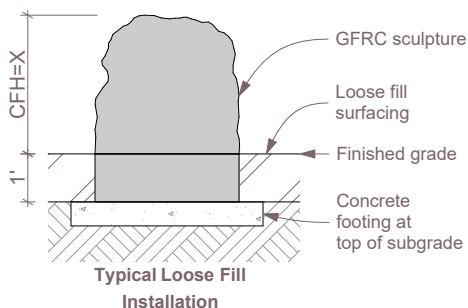


591 South Boulevard Street
Gunnison, Colorado 81230
info@idsculpture.com
970-641-1747

PRE-INSTALL CHECKLIST

Please review prior to ordering and installing ID Sculpture products.

- ☐ 1. Verify that you have the recommended lifting equipment to unload and install your component, as specified by the installation instructions. Please check the installation instructions for the weight of each component and shipping dimensions.
- ☐ 2. Develop a proper plan to access the site and control access prior to opening.
- ☐ 3. Call your local utilities to locate any potential existing below grade equipment?
- ☐ 4. FOR ALL SCULPTURES: Verify you have accounted for adjustments to the footing depth based on your choice of safety surfacing material. Footing depth must be adjusted to compensate for the depth/thickness requirements of the selected safety surfacing (*see diagrams below*). Layout drawings show the uninstalled dimensions of the component. If you require a modification to a standard component, please notify ID Sculpture when placing your order. *Additional charges may apply.*



*Critical Fall Height (CFH)

- ☐ 5. Verify that you have installed any required footings prior to the arrival of your sculptures. Please note, footings should be allowed to cure for a minimum of 7 days.

Important Safety Note:

Please install and maintain adequate protective surfacing under and around your equipment. Never let children play on the equipment before protective surfacing is installed. Please consult ASTM F1487 for more information.

Installation Instructions

Home Tree

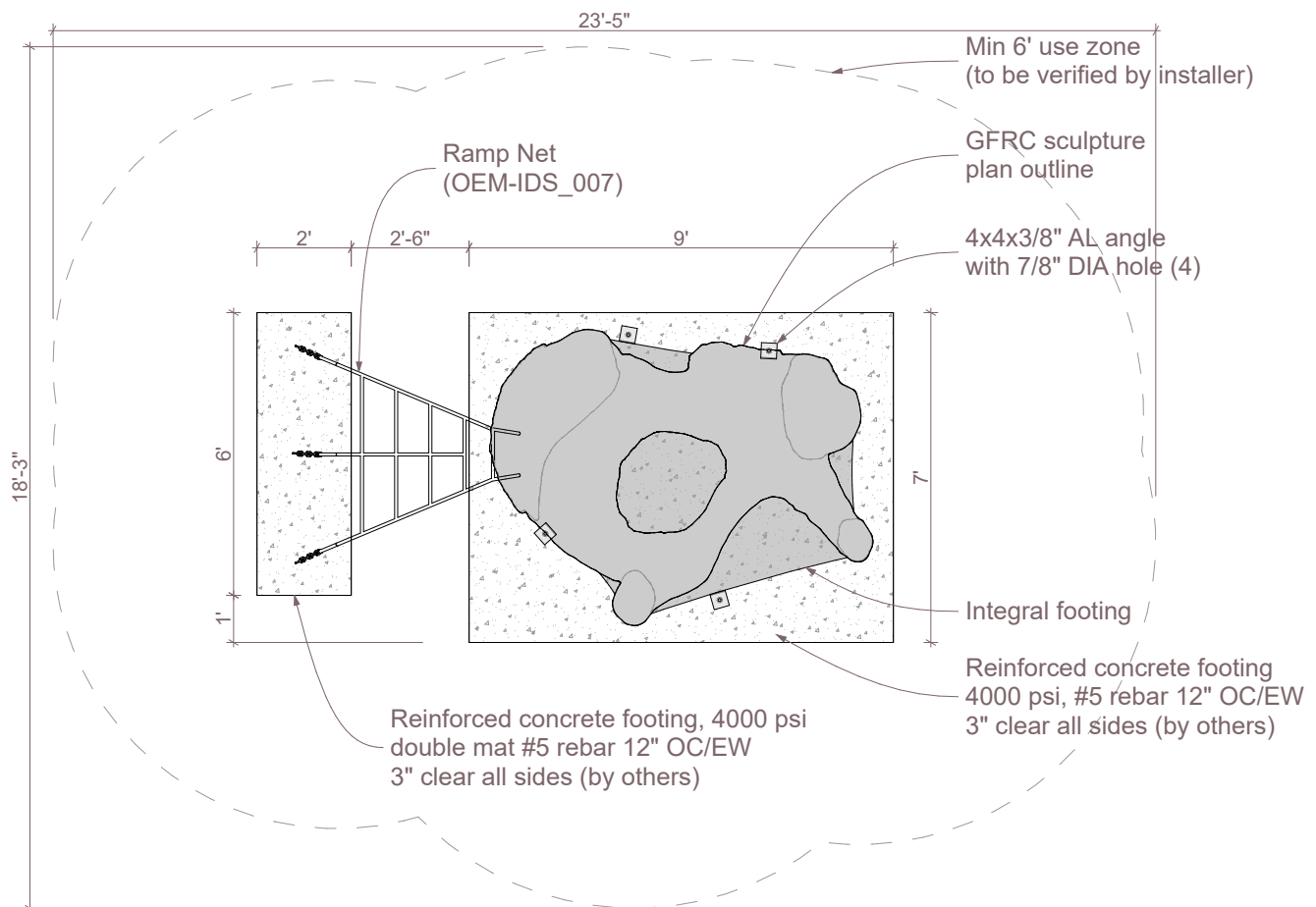
Part # AP004



591 South Boulevard Street
Gunnison, Colorado 81230
info@idsculpture.com
970-641-1747

Sculpture Installation:

1. Locate and construct the footer based on the provided layout plan drawing.
2. Make sure that the bolt hanger / lifting eyes (4ct) are securely attached to the 5/8" bolts protruding from the base of the boulder. Secure the (4) 12' lifting straps to bolt hangers using 1/2" quick links.
3. Lift the sculpture using an appropriate reach forklift or crane taking care to equalize the load on straps.
4. Set the piece in place on the poured footing and verify all use zones as required by ASTM 1487.
5. Remove the bolt hangers, replace the 5/8" nut over mounting brackets. .
6. Drill through the holes in the mounting brackets with a 3/4" x 10" hammer drill to a minimum depth of 7-1/2", clean holes with compressed air and brush.
7. Install the stainless steel wedge anchors and tighten.
8. Install Ramp Net. (Refer to P.4 "Net Installation")
9. Install resilient surfacing material in accordance with layout guidelines, and ASTM standards.



Plan

Installation Instructions

Home Tree

Part # AP004



ID SCULPTURE

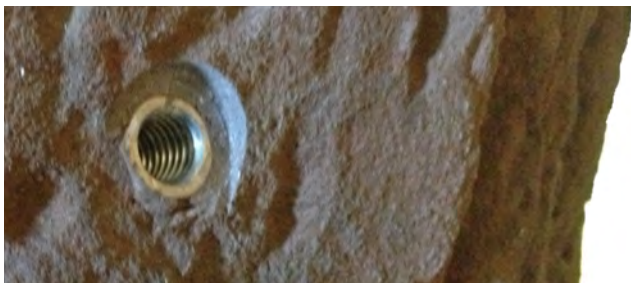
PLAY. CLIMB. EXPLORE.

591 South Boulevard Street
Gunnison, Colorado 81230
info@idsculpture.com
970-641-1747

Net Installation

1. Connect net to GRFC sculpture with provided igloo rope connector & connection pin.
2. Locate the chain connection points by pulling chain in line with the net and mark holes. Remove excess chain links as necessary.
3. Drill and clean holes (3) with a 1/2" hammer drill bit in the marked locations on the footer to a minimum depth of 7".
4. Secure the supplied 1/2" x 8-1/2" SS wedge anchors (3) leaving 1-1/2" of thread exposed above footing.
5. Connect chain to the wedge anchor following the detail below. Remove excess chain links as necessary using angle grinder. Trim anchor stud flush with top of nut.
6. Install resilient surfacing material in accordance with layout guidelines, and ASTM standards.

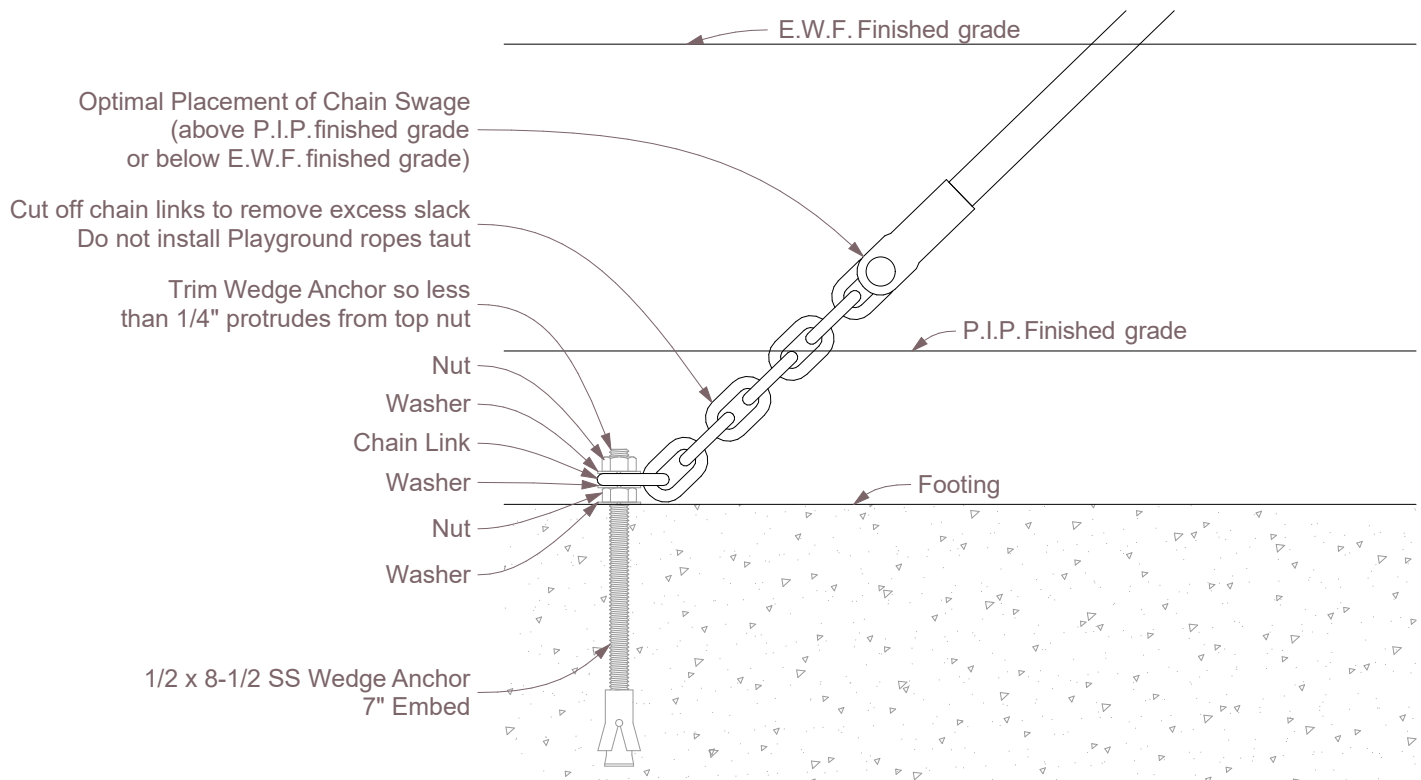
*Never install any rope component taut, some slack should be present.



Female Threaded Connection



Rope Connection Detail



Rope to Footing Connection Detail

Installation Instructions

Home Tree

Part # AP004



ID SCULPTURE

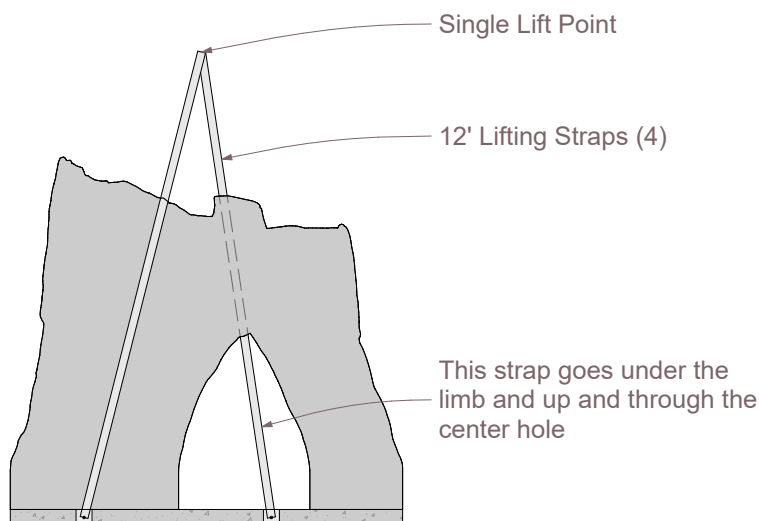
PLAY. CLIMB. EXPLORE.

591 South Boulevard Street

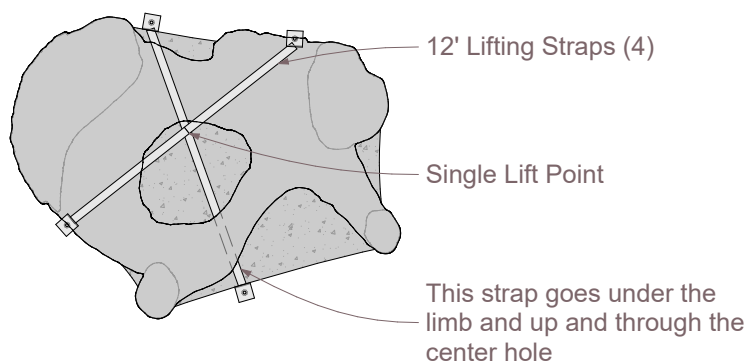
Gunnison, Colorado 81230

info@idsculpture.com

970-641-1747



Pick Diagram - Elevation



Pick Diagram - Plan