

Installation Instructions

8' Split Log Bench

Part # SF032



ID SCULPTURE

PLAY. CLIMB. EXPLORE.

591 South Boulevard Street
Gunnison, Colorado 81230
info@idsculpture.com
970-641-1747

Specifications: 8' Split Log Bench

- Material: GFRF Concrete with Structural Foam
- Approximate uninstalled Size: 8'-0"x2'-2"x1'-6"
- Approximate Weight: 1,800 Lbs
- Maximum fall height: 1'-6"
- Age group: N/A

Required Parts (included):

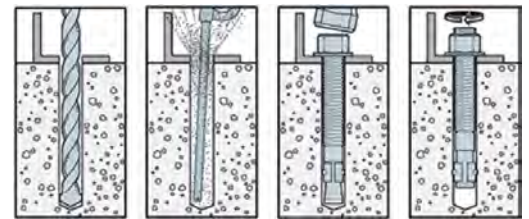
- 8' Split Log Bench
- Steel Supports (2)
- 1/2" x 4 1/2" SS Wedge Anchor: 8ct
- 1/2" x 1 1/2" Bolt: 8ct
- "8' Split Log Bench" Drawing set

Recommended Equipment (not included):

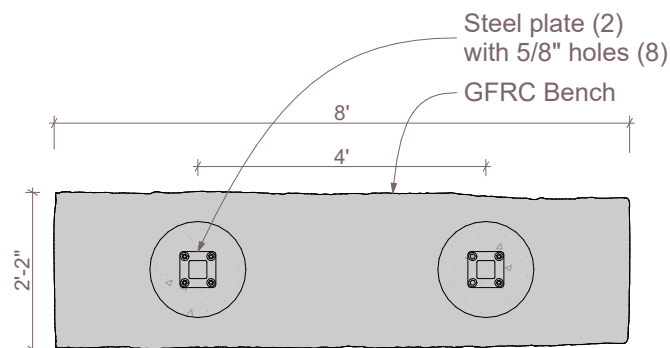
- Hammer Drill
- 1/2"x 6" Concrete Drill Bit
- Air Compressor with Blow Tube
- Hole Brush
- Adjustable Wrench
- 8' lifting straps: 2ct
- Large adjustable crescent wrench
- Lift: Reach Type Forklift 6,000lb Capacity, Skid Steer or Crane

Important Notes:

- *Warning: Installation over a hard surface such as asphalt, or packed earth may result in serious injury or death from falls.*
- *It is the responsibility of the installer to ensure all components are installed in compliance with ASTM F-1487.*
- *All site built footings should be allowed to cure for a minimum of 48 hours prior to installation.*



Typical Wedge Anchor Installation



Plan

Installation Instructions

8' Split Log Bench

Part # SF032



ID SCULPTURE

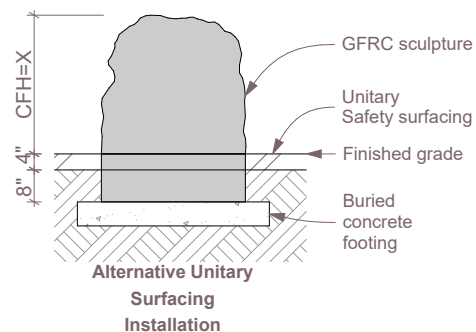
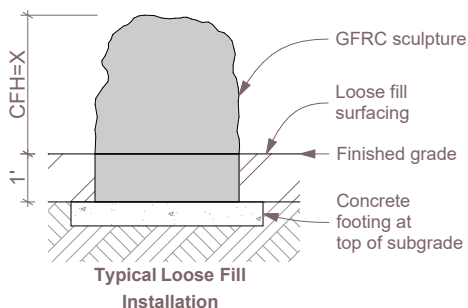
PLAY. CLIMB. EXPLORE.

591 South Boulevard Street
Gunnison, Colorado 81230
info@idsculpture.com
970-641-1747

PRE-INSTALL CHECKLIST

Please review prior to ordering and installing ID Sculpture products.

- ☐ 1. Verify that you have the recommended lifting equipment to unload and install your component, as specified by the installation instructions. Please check the installation instructions for the weight of each component and shipping dimensions.
- ☐ 2. Develop a proper plan to access the site and control access prior to opening.
- ☐ 3. Call your local utilities to locate any potential existing below grade equipment?
- ☐ 4. FOR ALL SCULPTURES: Verify you have accounted for adjustments to the footing depth based on your choice of safety surfacing material. Footing depth must be adjusted to compensate for the depth/thickness requirements of the selected safety surfacing (*see diagrams below*). Layout drawings show the uninstalled dimensions of the component. If you require a modification to a standard component, please notify ID Sculpture when placing your order. *Additional charges may apply.*



*Critical Fall Height (CFH)

- ☐ 5. Verify that you have installed any required footings prior to the arrival of your sculptures. Please note, footings should be allowed to cure for a minimum of 7 days.

Important Safety Note:

Please install and maintain adequate protective surfacing under and around your equipment. Never let children play on the equipment before protective surfacing is installed. Please consult ASTM F1487 for more information.

Installation Instructions

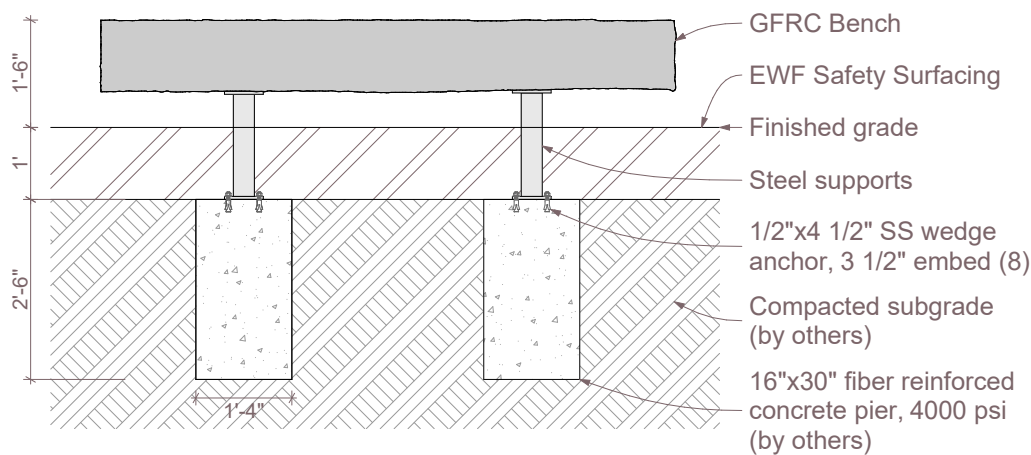
8' Split Log Bench

Part # SF032



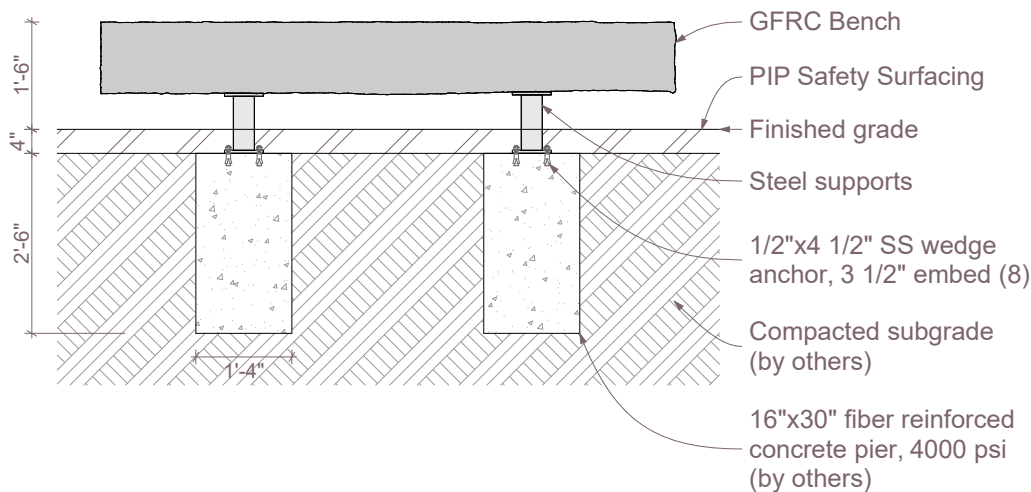
591 South Boulevard Street
Gunnison, Colorado 81230
info@idsculpture.com
970-641-1747

Installation Type A



Section

Installation Type B



Section

Installation Instructions

8' Split Log Bench

Part # SF032

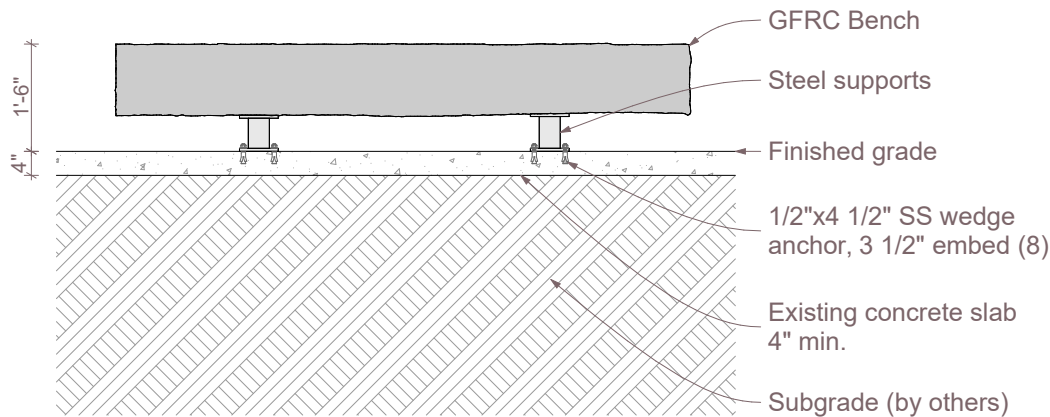


ID SCULPTURE

PLAY. CLIMB. EXPLORE.

591 South Boulevard Street
Gunnison, Colorado 81230
info@idsculpture.com
970-641-1747

Installation Type C



Section

Sculpture Installation:

1. Locate the concrete piers or slab based on the provided layout plan drawing.
2. Place the pallet mounted sculpture on the piers/slab, disconnect the sculpture to pallet connections and discard pallet.
3. Make sure that the lifting straps are securely wrapped around the ends of the sculpture.
4. Lift the sculpture using an appropriate reach forklift, skid steer or crane taking care to equalize the load on straps.
5. Connect the steel supports to the sculpture using the provided 1/2" x 1 1/2" bolts.
6. Remove the pallet and set the sculpture in place on the footing or slab, verify all use zones as defined by ASTM 1487 before drilling anchor holes. (when applicable)
7. Drill through the holes (8) in the steel plates and into the concrete piers or slab with a 1/2"x6" hammer drill bit to a minimum depth of 3 1/2", clean holes with compressed air and brush.
 - 7a. If unable to access holes in steel plates:
 - Mark hole locations (8) through the steel plates.
 - Move sculpture to side to drill holes at marked locations (8)
 - Then place sculpture back in place.
8. Install the stainless steel 1/2"x4 1/2" wedge anchors and tighten.
9. Install finish surface material in accordance with layout guidelines, and ASTM standards (when applicable).

Installation Instructions

8' Split Log Bench

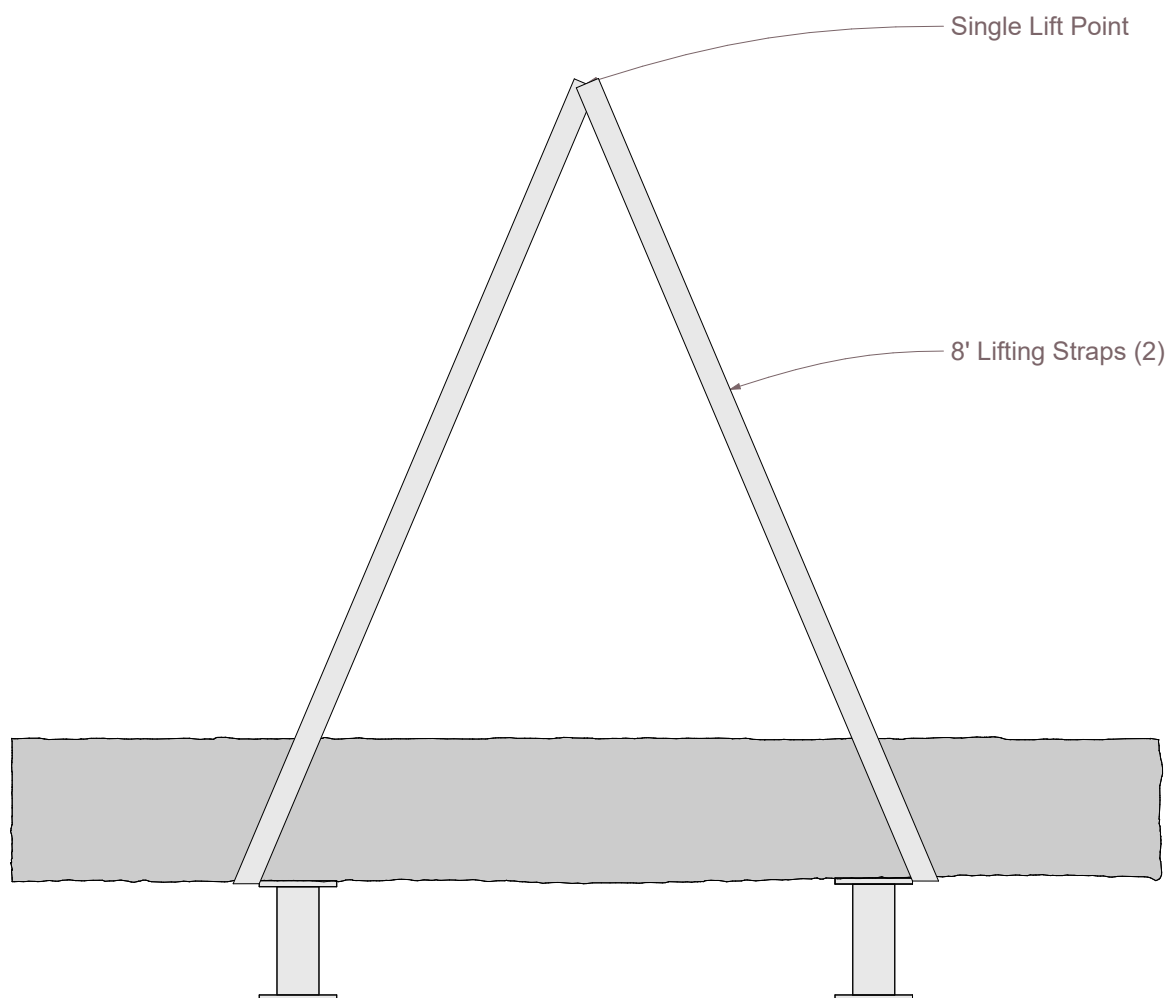
Part # SF032



ID SCULPTURE

PLAY. CLIMB. EXPLORE.

591 South Boulevard Street
Gunnison, Colorado 81230
info@idsculpture.com
970-641-1747



Rigging Diagram