

Installation Instructions

Wildwood Crossing

Part # CMB039



Specifications: Wildwood Crossing Combo

- Material: GFRC Concrete with Structural Foam
- Approximate Uninstalled Size (Gnarly Tree): 7'-0" x 6'-0" x 9'-6" Tall
- Approximate Uninstalled Size (Driftwood Fort): 12'-10" x 8'-0" x 9'-5" Tall
- Approximate Uninstalled Size (Elder Tree): 8'-3" x 7'-0" x 9'-6" Tall
- Approximate Weight (Gnarly Tree): 4,500 Lbs
- Approximate Weight (Driftwood Fort): 11,500 Lbs
- Approximate Weight (Elder Tree): 6,700 Lbs
- Maximum Fall Height: 8'-0" (with 1' of Safety Surfacing)
- Age Group: 5-12 Years Old

Required Parts (included):

- Gnarly Tree GFRC Sculpture
- Driftwood Fort GFRC Sculpture
- Elder Tree GFRC Sculpture
- Over Under Ropes Sculpture Ropes
- Over Under Bridge Sculpture Ropes
- 4"x4"x4"x3/8" Aluminum Angle Mounting Brackets: 8ct
- Bolt Hangers (Lifting Eyes): 8ct
- Heavy Duty Hoist Rings: 4ct
- 3/4" x 8-1/2" SS Wedge Anchor: 8ct
- Igloo Rope Connector w/Connection Pin: 8ct
- Security Hex Key
- "Wildwood Crossing" Drawing Set

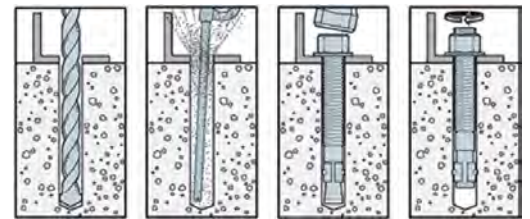
Recommended Equipment (not included):

- Hammer Drill
- 3/4" x 10" Concrete Drill Bit
- Air Compressor
- Hammer
- 1-1/8" Wrench
- 12' Lifting Straps: 4ct
- 14' Lifting Straps: 4ct
- Wrench Set / Socket Set
- 1/2" Quick Links: 8ct
- 5/8" Shackles: 4ct
- Lift: Reach Type Forklift 12,000lb Capacity or Crane

591 South Boulevard Street
Gunnison, Colorado 81230
info@idsculpture.com
970-641-1747

Important Notes:

- *Warning: Installation over a hard surface such as asphalt, or packed earth may result in serious injury or death from falls.*
- *It is the responsibility of the installer to ensure all components are installed in compliance with ASTM F-1487.*
- *All site built footings should be allowed to cure for a minimum of 48 hours prior to installation.*



Typical Wedge Anchor Installation

Installation Instructions

Wildwood Crossing

Part # CMB039

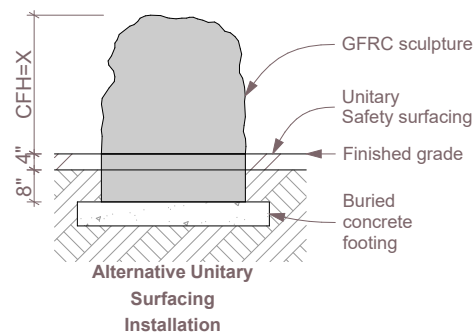
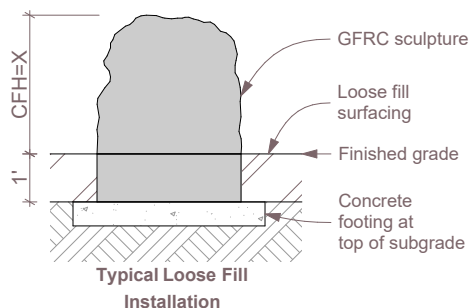


591 South Boulevard Street
Gunnison, Colorado 81230
info@idsculpture.com
970-641-1747

PRE-INSTALL CHECKLIST

Please review prior to ordering and installing ID Sculpture products.

- ☐ 1. Verify that you have the recommended lifting equipment to unload and install your component, as specified by the installation instructions. Please check the installation instructions for the weight of each component and shipping dimensions.
- ☐ 2. Develop a proper plan to access the site and control access prior to opening.
- ☐ 3. Call your local utilities to locate any potential existing below grade equipment?
- ☐ 4. FOR ALL SCULPTURES: Verify you have accounted for adjustments to the footing depth based on your choice of safety surfacing material. Footing depth must be adjusted to compensate for the depth/thickness requirements of the selected safety surfacing (*see diagrams below*). Layout drawings show the uninstalled dimensions of the component. If you require a modification to a standard component, please notify ID Sculpture when placing your order. *Additional charges may apply.*



*Critical Fall Height (CFH)

- ☐ 5. Verify that you have installed any required footings prior to the arrival of your sculptures. Please note, footings should be allowed to cure for a minimum of 7 days.

Important Safety Note:

Please install and maintain adequate protective surfacing under and around your equipment. Never let children play on the equipment before protective surfacing is installed. Please consult ASTM F1487 for more information.

Installation Instructions

Wildwood Crossing

Part # CMB039



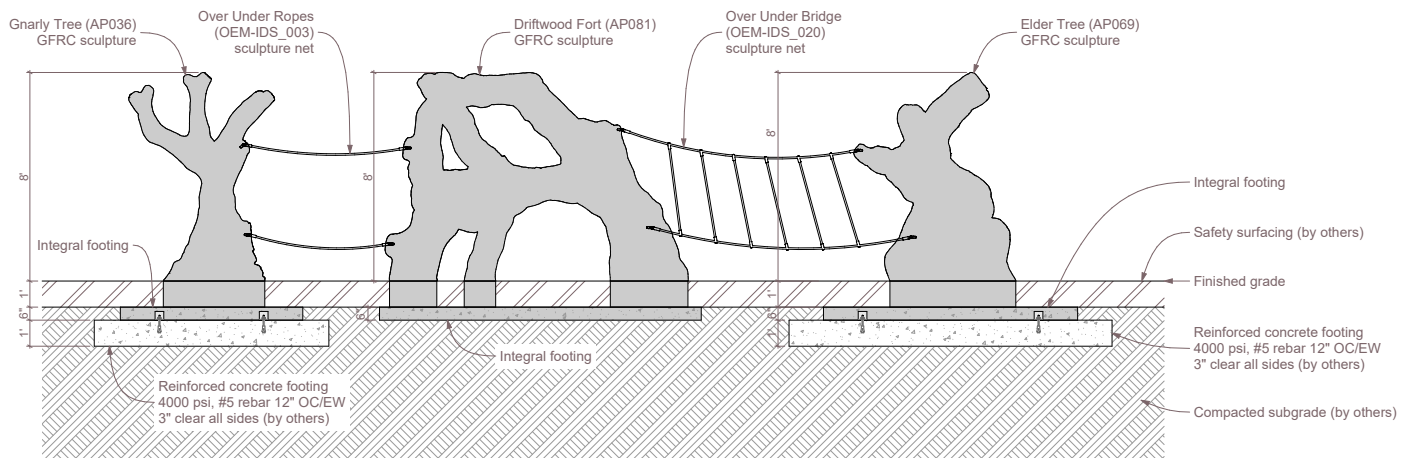
591 South Boulevard Street
Gunnison, Colorado 81230
info@idsculpture.com
970-641-1747

Sculpture Installation: Gnarly Tree and Elder Tree

1. Locate and construct the footers based on the provided layout plan drawing.
2. Make sure that the bolt hanger / lifting eyes (4ct / sculpture) are securely attached to the 5/8" bolts protruding from the base of the boulder. Secure the 12' lifting straps (4ct / sculpture) to bolt hangers using 1/2" quick links. Refer to pick diagrams on P4 and P7.
3. Lift each sculpture using an appropriate reach forklift or crane taking care to equalize the load on straps.
4. Set each piece in place on the poured footing and verify all use zones as required by ASTM 1487.
5. Do not remove the bolt hangers or drill anchor holes until sculpture ropes are installed and tensioned.

Sculpture Installation: Driftwood Fort

6. Excavate the site below the top of subgrade as per the provided layout drawings.
7. Compact the subgrade beneath the sculpture, level using sand as necessary.
8. Make sure that the heavy duty hoist rings are securely attached to the bolts protruding from the sides of the integral footing. Secure the lifting straps to heavy duty hoist rings using the 5/8" shackles and connect to the spreader bar. Refer to pick diagram on P6.
9. Lift the sculpture using an appropriate reach forklift or crane taking care to equalize the load on straps.
10. Set the sculpture in place and verify layout and all use zones as required by ASTM 1487.
11. Do not remove heavy duty hoist rings until sculpture ropes are installed and tensioned.



Installation Instructions

Wildwood Crossing

Part # CMB039



591 South Boulevard Street
Gunnison, Colorado 81230
info@idsculpture.com
970-641-1747

Sculpture Ropes Installation:

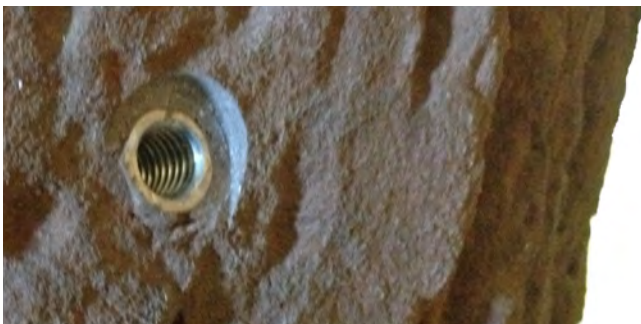
12. Connect sculpture ropes to GRFC sculptures with provided Igloo rope connectors & connection pins (8).
 13. Adjust rope tension between the sculptures by carefully sliding sculptures with crane or reach forklift.
 14. When proper tension is achieved verify all use zones as defined by ASTM 1487.
- *** Never install any rope component taut, some slack should always be present.***

Sculpture Installation Continued:

15. Only after all sculpture ropes have been connected and adjusted and use zones as defined by ASTM 1487 have been verified, should the sculptures be anchored to the ground.
16. Remove the bolt hangers, replace the 5/8" nut over mounting brackets.
17. Remove heavy duty hoist rings.
18. Drill through the holes in the mounting brackets with a 3/4" x 10" hammer drill bit to a minimum depth of 7-1/2", clean holes with compressed air and brush.
19. Install the 3/4" x 8-1/2" stainless steel wedge anchors (8) and tighten.
20. Backfill so the subgrade is level with the top of the integral footings and compact as necessary.
21. Install resilient surfacing material in accordance with layout guidelines, and ASTM standards.



Typical Parallel Ropes Tension



Female Threaded Connection



Installed Igloo Connector

Installation Instructions

Wildwood Crossing

Part # CMB039



ID SCULPTURE

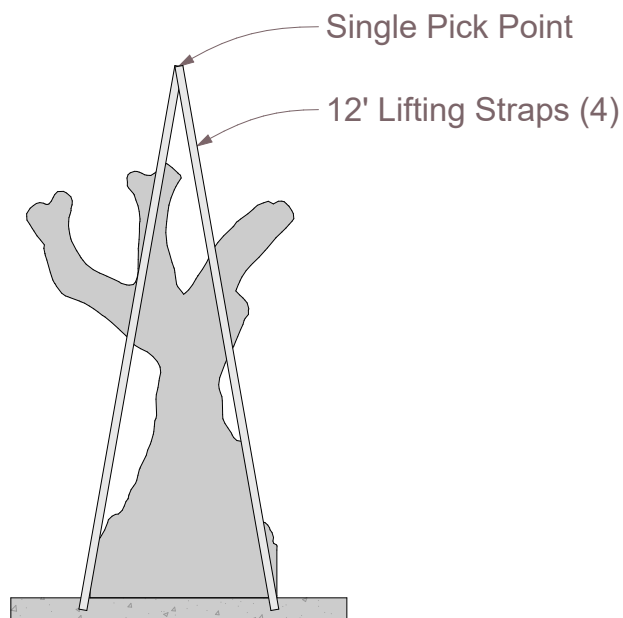
PLAY. CLIMB. EXPLORE.

591 South Boulevard Street

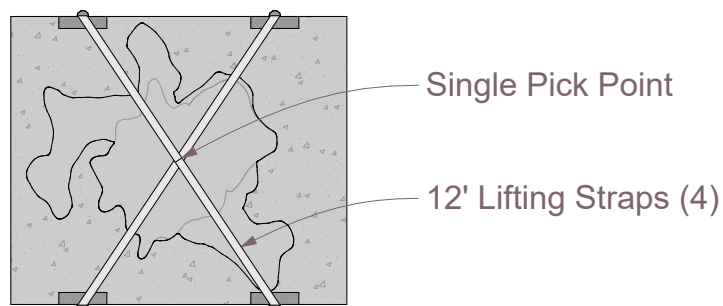
Gunnison, Colorado 81230

info@idsculpture.com

970-641-1747



Gnarly Tree - Pick Diagram - Elevation



Gnarly Tree - Pick Diagram - Plan

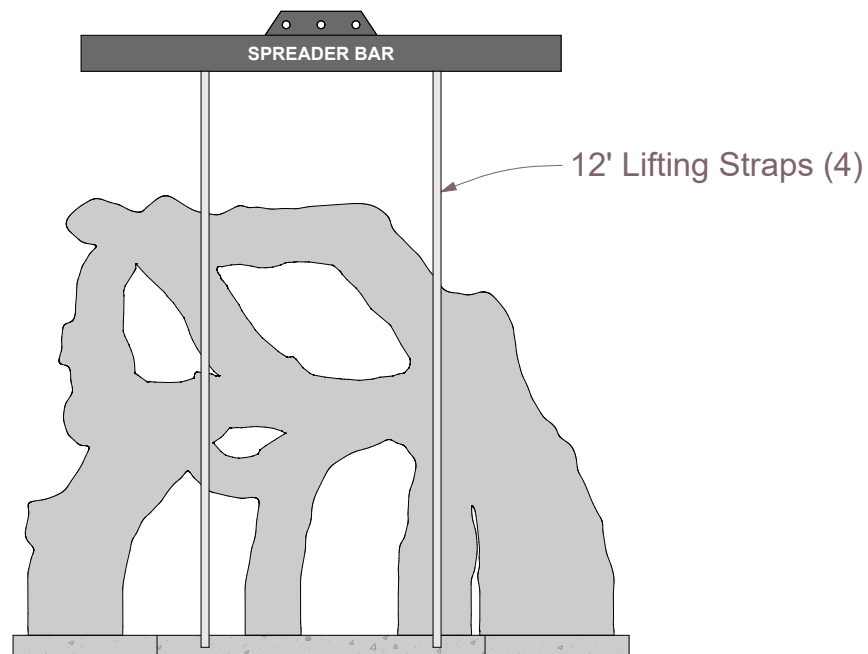
Installation Instructions

Wildwood Crossing

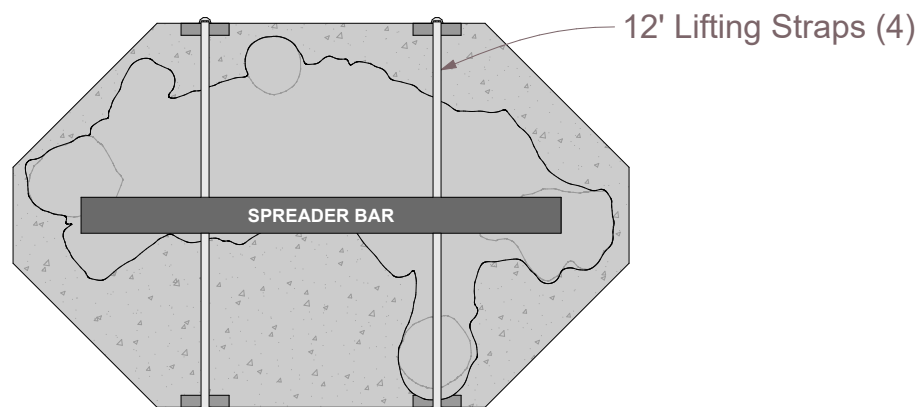
Part # CMB039



591 South Boulevard Street
Gunnison, Colorado 81230
info@idsculpture.com
970-641-1747



Driftwood Fort - Pick Diagram - Elevation



Driftwood Fort - Pick Diagram - Plan

Installation Instructions

Wildwood Crossing

Part # CMB039



ID SCULPTURE

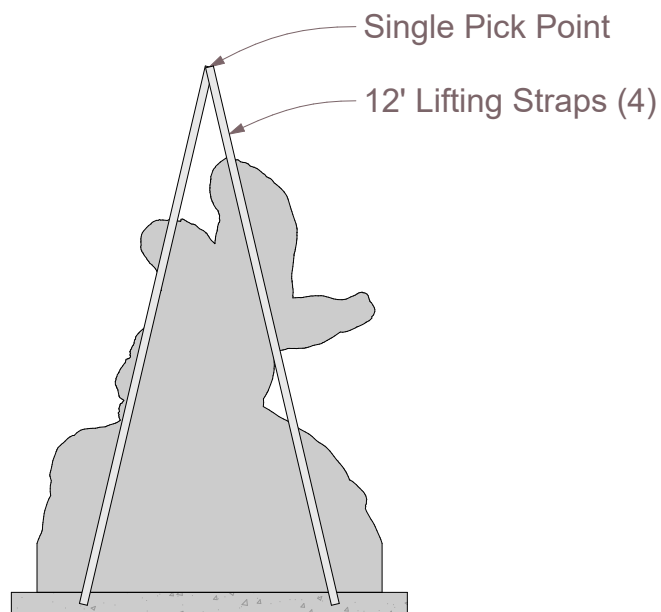
PLAY. CLIMB. EXPLORE.

591 South Boulevard Street

Gunnison, Colorado 81230

info@idsculpture.com

970-641-1747



Elder Tree - Pick Diagram - Elevation



Elder Tree - Pick Diagram - Plan